



SUMMERSTOWN, SW17 0AY

Asking Price £700,000

We are extremely excited to present this fantastic three double bedroom duplex apartment with a private garden and secure underground parking. Beautifully arranged over two floors and extending to 1,195 sq ft, this impressive home features its own private front door and comprises: three bedrooms, two bathrooms, a downstairs WC, a large L-shaped open plan reception room/dining room/kitchen, and a rear garden. Residents benefit from 24-hour concierge, secure underground parking, and access to the communal gardens. This is a truly unique duplex apartment and must be seen to be fully appreciated. Leasehold. EPC rating B. Council Tax Band E. Please see the virtual tour provided: <https://my.matterport.com/show/?m=7jA7BEhfKaA>.

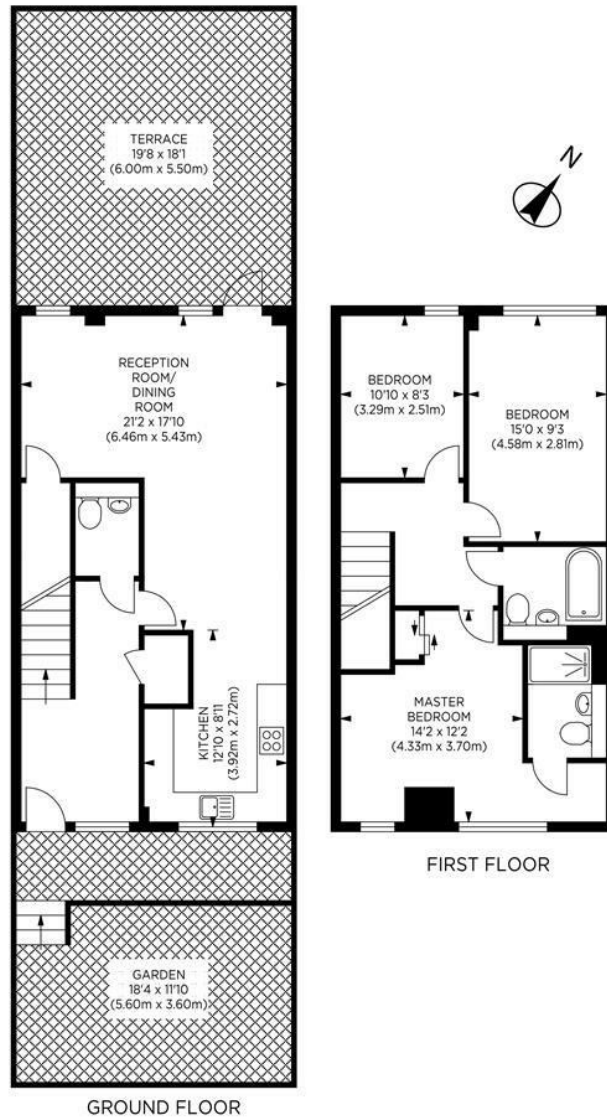


www.maalems.co.uk

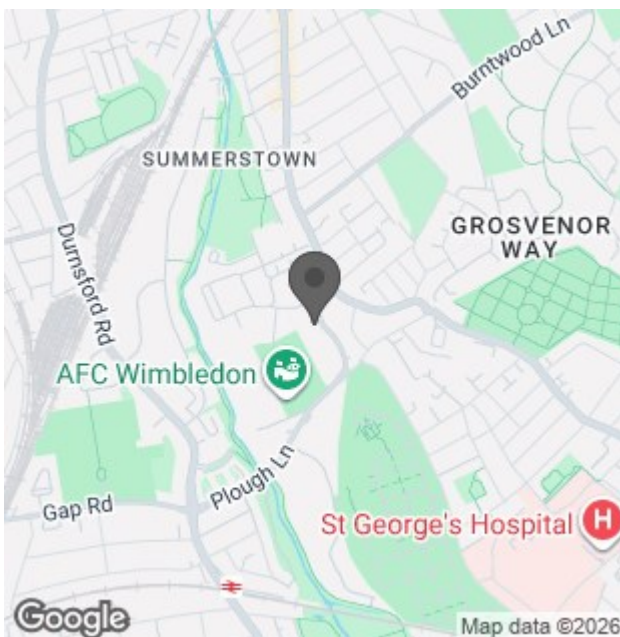
Earlsfield & Wandsworth Office
344 Garratt Lane
Earlsfield, London SW18 4EL
T: 020 8875 9200
earlsfield@maalems.co.uk

Registered in England & Wales No. 5585458





Summerstown, SW17 OAY
Gross Internal Area 1195 sq ft/ 111 sq metres



Energy Efficiency Rating		
	Current	Potential
Very energy efficient - lower running costs		
(92 plus) A		
(81-91) B	84	84
(69-80) C		
(55-68) D		
(39-54) E		
(21-38) F		
(1-20) G		
Not energy efficient - higher running costs		
England & Wales EU Directive 2002/91/EC		
Environmental Impact (CO ₂) Rating		
	Current	Potential
Very environmentally friendly - lower CO ₂ emissions		
(92 plus) A		
(81-91) B		
(69-80) C		
(55-68) D		
(39-54) E		
(21-38) F		
(1-20) G		
Not environmentally friendly - higher CO ₂ emissions		
England & Wales EU Directive 2002/91/EC		

For an instant or face to face valuation, please scan the QR code:



www.maalems.co.uk
Earlsfield & Wandsworth Office
344 Garratt Lane
Earlsfield, London SW18 4EL
T: 020 8875 9200
earlsfield@maalems.co.uk

Registered in England & Wales No. 5585458

